

QUICK SELECTION / Selezione veloce The dynamic efficiency is **0.94** for all ratios **input speed (n₁) = 1400 min⁻¹**

| Output Speed n ₂ [min ⁻¹] | Ratio i | Motor power P _{1M} [kW] | Output torque M _{2M} [Nm] | Service factor f.s. | Nominal power P _{1R} [kW] | Nominal torque M _{2R} [Nm] | Available B5 motor flanges | | | | Available B14 motor flanges | | | Output Shaft | Ratios code | |
|--|---------------|--|--|------------------------|--|---|----------------------------|----|----|----|-----------------------------|----|----|------------------|--|---|
| | | | | | | | B | C | D | E | Q | R | T | | | |
| | | | | | | | 63 | 71 | 80 | 90 | 71 | 80 | 90 | | | |
| 24.7 | 56.76 | 1.1 | 398 | 1.0 | 1.1 | 410 | B | | | | C | C | | 191311 | standard ø35 ø40 On request | - |
| 21.3 | 65.79 | 0.75 | 316 | 1.3 | 0.97 | 410 | B | | | | C | C | | 171311 | | |
| 18.1 | 77.23 | 0.75 | 371 | 1.1 | 0.83 | 410 | B | | | | C | C | | 151311 | | |
| 16.0 | 87.23 | 0.75 | 420 | 1.0 | 0.73 | 410 | B | | | | C | C | | 19138 | | |
| 15.2 | 92.18 | 0.75 | 443 | 0.9 | 0.69 | 410 | B | | | | C | C | | 131311 | | |
| 13.9 | 100.47 | 0.55 | 357 | 1.2 | 0.64 | 410 | B | | | | C | C | | 19811 | | |
| 12.0 | 116.45 | 0.55 | 413 | 1.0 | 0.55 | 410 | B | | | | C | C | | 17811 | | |
| 11.1 | 125.82 | 0.55 | 447 | 0.9 | 0.51 | 410 | B | | | | C | C | | 101311 | | |
| 9.9 | 141.66 | 0.37 | 336 | 1.2 | 0.45 | 410 | B | | | | C | C | | 13138 | | |
| 8.6 | 163.16 | 0.37 | 387 | 1.1 | 0.39 | 410 | B | | | | C | C | | 13811 | | |
| 7.8 | 178.96 | 0.37 | 425 | 1.0 | 0.36 | 410 | B | | | | C | C | | 1788 | | |
| 7.2 | 193.36 | 0.37 | 459 | 0.9 | 0.33 | 410 | B | | | | C | C | | 10138 | | |
| 6.5 | 216.84 | 0.25 | 347 | 1.2 | 0.29 | 410 | B | | | | C | C | | 71311 | | |
| 5.5 | 252.36 | 0.25 | 404 | 1.0 | 0.25 | 410 | B | | | | C | C | | 9138 | | |
| 4.8 | 290.67 | 0.25 | 465 | 0.9 | 0.22 | 410 | B | | | | C | C | | 9811 | | |
| 4.2 | 333.23 | 0.18 | 408 | 1.0 | 0.19 | 410 | B | | | | C | C | | 7138 | | |
| 3.6 | 383.82 | 0.18 | 470 | 0.9 | 0.17 | 410 | B | | | | C | C | | 7811 | | |
| 3.1 | 446.70 | 0.12 | 353 | 1.2 | 0.14 | 410 | B | | | | C | C | | 988 | | |
| 2.4 | 589.85 | 0.09 | 372 | 1.1 | 0.11 | 410 | B | | | | C | C | | 788 | | |

Motor Flanges Available Flange Motore Disponibili
B) Supplied with Reduction Bushing Fornito con Bussola di Riduzione
B) Available on Request without reduction bushing Disponibile a Richiesta senza Bussola di Riduzione
C) Motor Flange Holes Position Posizione Fori Flangia Motore

EN Unit **X63A** is supplied with synthetic oil for lifetime lubrication, no maintenance is necessary. See table 1 for lubrication and recommended quantity. In table 2 please see possible radial loads and axial loads on the gearbox. For complete documentation please visit our web site.

I Il riduttore **X63A** viene fornito completo di olio sintetico per la lubrificazione permanente e non necessita di alcuna manutenzione. Vedi tab.1 per oli e quantità consigliati. In tab.2 sono presenti i carichi radiali e assiali applicabili al riduttore. Per la documentazione completa consulta il nostro sito.

D Das Getriebe **X63A** ist mit synthetischem Öl gefüllt und ist lebensdauergeschmiert. In Tabelle 1 ist die Schmiermenge und das empfohlene Schmiermittel angegeben. In Tabelle 2 sind die zulässigen Radial - und Axialbelastungen des Getriebes aufgeführt. Die komplette Dokumentation, Wartungs - und Inbetriebnahmeanleitungen finden Sie unter.

E El reductor tamaño **X63A** se suministra, lubricado de por vida con aceite sintético y no requieren mantenimiento alguna. Ver tabla 1, para cantidades y aceites recomendados. En la tabla 2, se encuentran las cargas radiales y axiales admitidas por el reductor. Para documentación completa, consultar nuestra Web.

| Standard supplied | For these mounting position specify in the order or add oil Per queste posizioni specificare in fase d'ordine o aggiungere olio | | | | | | |
|------------------------|--|------------------------|----------------------------|----------------------|---------|---------|--|
| | | | | | | | |
| 1.80 LT | 1.80 LT | 1.05 LT | 1.70 LT | 2.60 LT | 1.65 LT | 1.30 LT | |
| AGIP Telium VSF 320 | BP Energol SGXP220 | SHELL Tivela Oil WB | KLUBER Syntheso D220 EP | MOBIL Glygoyle 30 | | | |

Oil plugs on request / Tappi olio a richiesta. **tab. 1**

RADIAL AND AXIAL LOADS

Output shaft
Albero di uscita

$F_{eq} = F_R \cdot \frac{69}{X+39}$

| n ₂ [min ⁻¹] | FA | FR | n ₂ [min ⁻¹] | FA | FR | n ₂ [min ⁻¹] | FA | FR |
|--|-----|------|--|------|------|--|------|------|
| 250 | 600 | 3000 | 75 | 890 | 4450 | 15 | 1660 | 8300 |
| 150 | 700 | 3500 | 50 | 1140 | 5700 | | | |
| 100 | 780 | 3900 | 25 | 1330 | 6650 | | | |

F_R On request taper roller bearings to increase radial loads.
A richiesta cuscinetti a rulli conici per aumentare i carichi radiali.

Input shaft
albero in entrata

| n ₁ [min ⁻¹] | FA [N] | FR [N] |
|--|-----------|-----------|
| 1400 | 400 | 2000 |
| 900 | 440 | 2200 |
| 600 | 440 | 2200 |

*Strong axial loads in the DX direction are not allowed.
Non sono consentiti forti carichi assiali con direzione DX

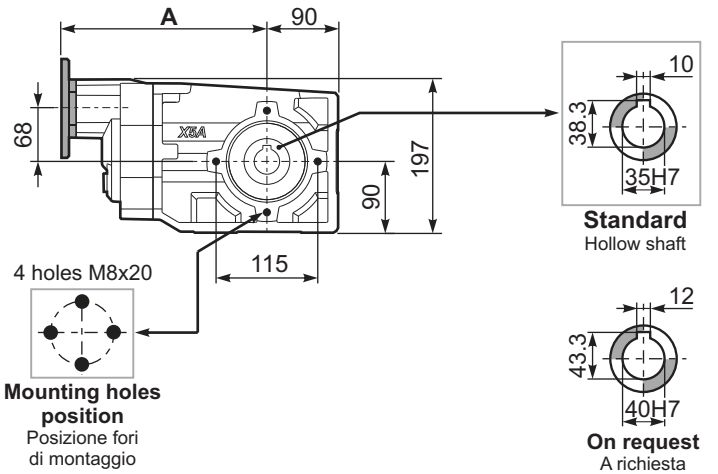
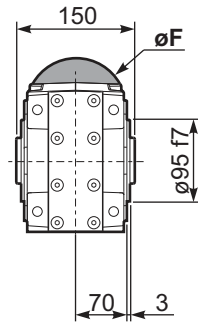
tab. 2

SELECT THIS TYPE AND THIS SPECIFIC SIZE ON THE WEB PAGES TO GET COMPLETE TECHNICAL DATA.
Selezionare tipo e gandezza specifica nel sito web per la documentazione completa.

PX63A-C... Basic Gearbox
Riduttore base

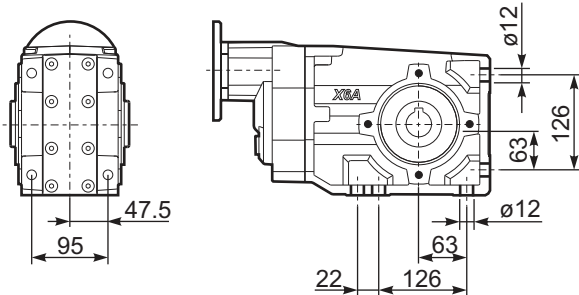
Gearbox weight **15.98 kg**
peso riduttore

| M. flanges | Kit code | øF | A |
|----------------|------------|-----|-----|
| 63B5 | K063.4.041 | 140 | 265 |
| 71B5 | K063.4.042 | 160 | 263 |
| 80/90B5 | K063.4.043 | 200 | 265 |
| 71B14 | K063.4.047 | 105 | 263 |
| 80B14 | K063.4.046 | 120 | 264 |
| 90B14 | K063.4.041 | 140 | 265 |

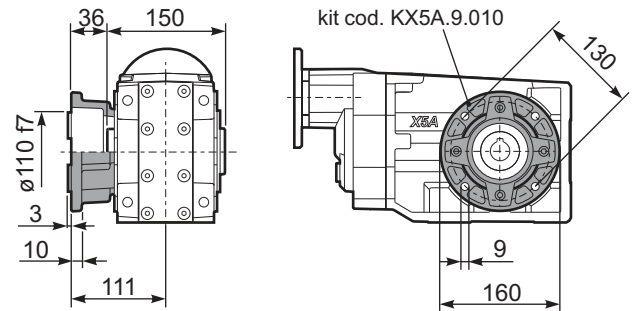


Mounting holes position
Posizione fori di montaggio

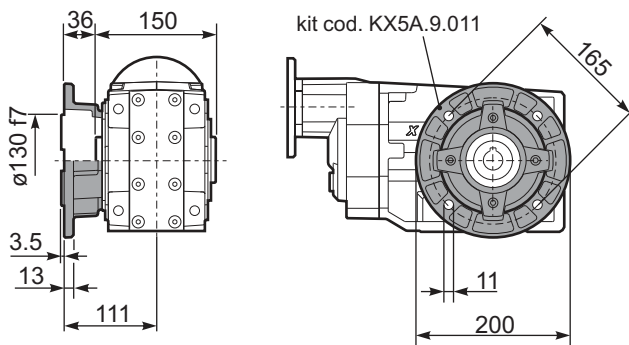
PX63A-N.. Feet
Piedini



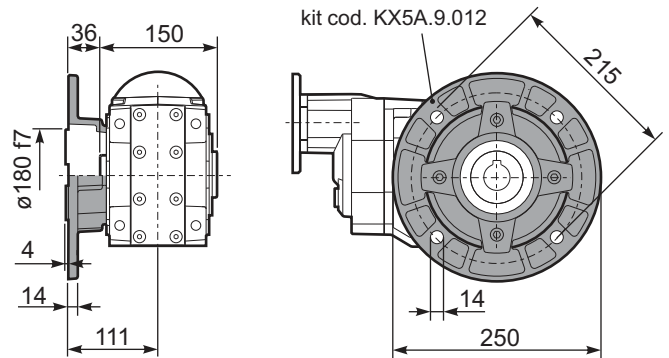
PX63A-F2.. Output flange
Flangia uscita



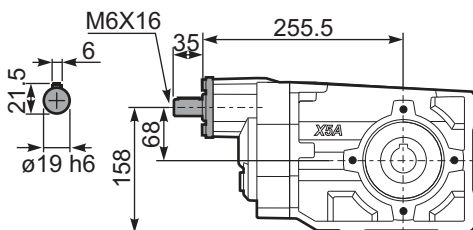
PX63A-F3.. Output flange
Flangia uscita



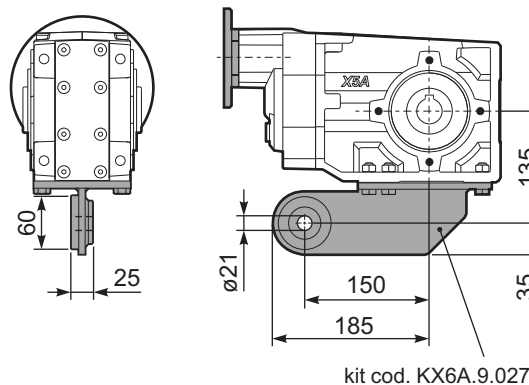
PX63A-F4.. Output flange
Flangia uscita



RX63A... Input shaft
Albero in entrata



PX63A-BR.. Reaction Arm
Braccio di reazione



PX63A..A.. Single output shaft
Albero semplice in uscita

