

CONTROL BOXES

JCB35J

FEATURES

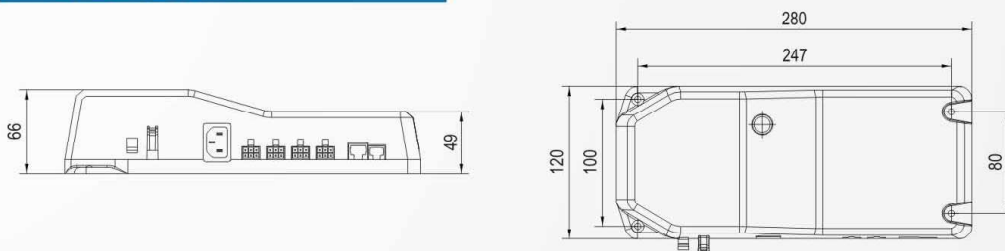
- Can control up to 4 actuators or columns working synchronized and soft start and stop function
- The standby consumption is less than 0.2 W
- It is popular to be used for adjustable office table



SPECIFICATIONS

Number of actuator outputs	1-4 outputs	Overload protection	For all channels, single-extra protected (see page 07)
Output Voltage (VDC)	31	Fuse	Can be changed from outer side
Input Voltage (VAC)	110 or 230	Cable length	3m
Transformer power (Watts)	200/360	IP Grade	IP20
Actuator plugs	6m (see page 56)	Ambient temperature	+5°C ~ + 40°C
Hand/Foot-Control plugs	rj (see page 56)	Standard	UL60601-1 / CE
Power plug	Option (see page 56)	Other Features	Stroke length, retracted length, speed, ... can be adjusted by our accessory JCHY35.
Colour	Black		
Duty cycle	10%, max 2min. continuous use		

DIMENSIONS



ORDER KEY EXAMPLE

JCB35J - 2 - 24 - 230 - 200 - 6m - rj - EF - B - X

