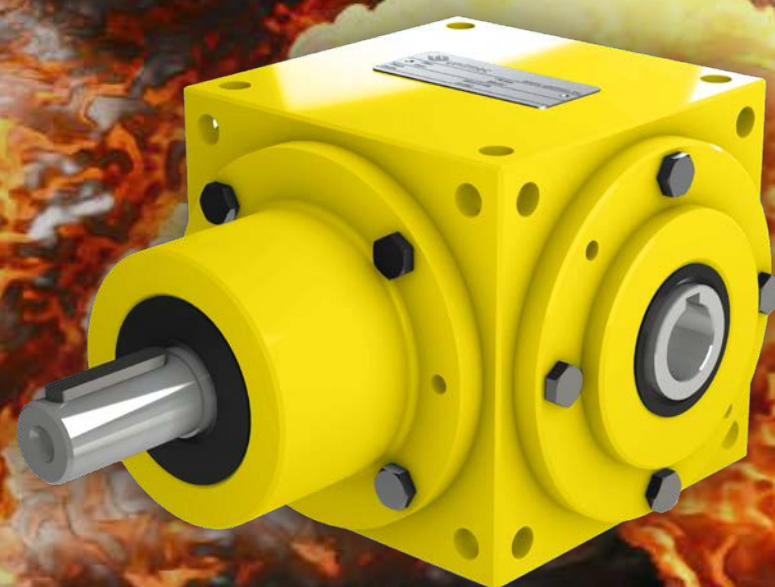


BEVEL GEARBOXES ATEX EDITION



ALSO AVAILABLE IN
STAINLESS STEEL

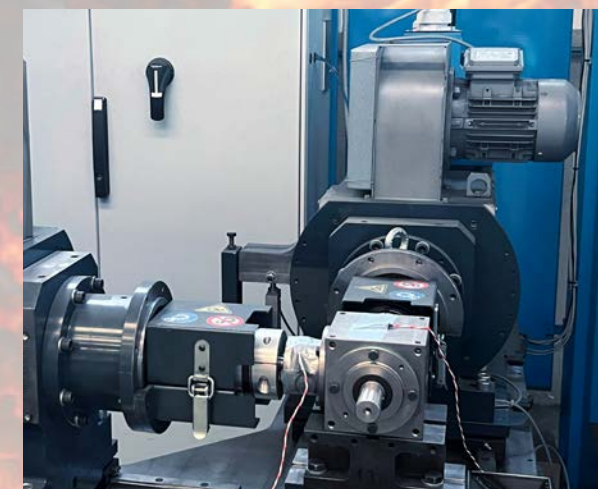
ALL SIZES!

ALL MODELS!

ALL FORMS!

ENDURANCE TEST BENCH

The ATEX Series was designed with the aid of a custom-made 80 kW gearbox test bench specifically developed for Unimec's R&D Department



The Unimec “ATEX Series” is an ATEX Directive-compliant line of products intended for use in potentially explosive atmospheres

REGULATIONS

2014/34/EU	ATEX Directive
2006/42/EC	Machinery directive

APPLICATION RATINGS

Category	2GD
Gas group	II G
Dust group	III C
Type of protection	ϵ_x “h”

CONSTRUCTIVE FEATURES

Viton seals
PT100 temperature probe (Atex marked)

NORMS

EN 1127-1:2019
EN ISO 80079-36:2016
EN ISO 80079-37:2016

Temperature class	T5
Max surface temperature	100 °C
Ambient temperature	-20/+55 °C
IP classification	65

Oil level indicator (Atex compliant)*
Magnetic fill&drain plugs*

* Gearbox installation orientation must always be indicated for correct plug positioning

ALL DIMENSIONS AND FEATURES ARE STANDARD AS PER OFFICIAL CATALOGS EXCEPT THE FOLLOWING POWER TABLES

POWER TABLES

